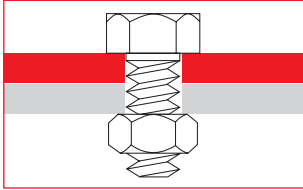




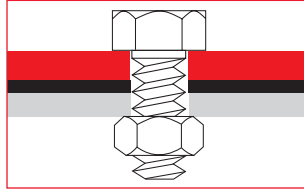
RediPower

Impact & Ratchet wrenches

Different types of joints

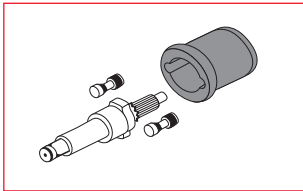


Hard joint:
metal on metal

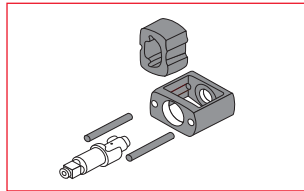


Soft joint:
joint between 2 metal pieces

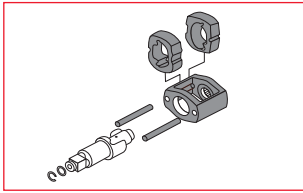
This is why we propose several types of clutch



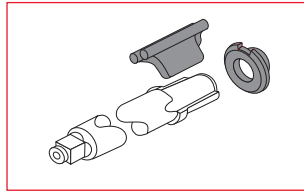
Pin clutch:
Excellent on hard joints with a good power/weight ratio.



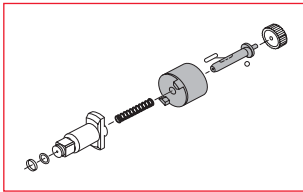
Single dog clutch:
For soft and hard joints. High power/weight ratio.



Twin dog clutch:
All round clutch with a high ultimate torque and high power/weight ratio.



Rocking dog clutch:
Good on very soft joints providing high speed rundown.



2 Jaw clutch:
Good on soft or hard joints with high ultimate torques.



Which tool to choose?

Impact wrenches

An impact wrench delivers a series of rotary blows to a fastener, producing torque. The advantage of impact wrenches is the high power-to-weight ratio, fast rundown, and limited torque reaction to the operator.

Ratchet wrenches

For fastening applications in tight and difficult-to-access areas, RediPower offers you a wide range of ratchet wrenches with various square drive sizes (1/4", 3/8", 1/2") and torque from 7 to 122Nm (5 to 90ft.lb).

To make the best assembly, you can choose an impact or a ratchet wrench.

As a guide, use the table below. This will assist you in making the correct choice of tool for your application.

Clutch Options: Weight/ Power ratio			
Type of Clutches:	Hard	Soft	Very soft
Pin clutch	✓	✓	✓
Single dog clutch	✓	✓	✓
Twin dog clutch	✓	✓	✓
Rocking dog clutch	✓	✓	✓
2 Jaw clutch	✓	✓	✓

Ultimate ✓ Very good ✓ Good ✓

In case of use:	Impact Wrenches	Ratchet Wrenches
Tight access	✓	✓
Standard fastening	✓	✓
Break type fastening	✓	✓
Locking screw	✓	✓
Unlocking screw	✓	✓
Socket type "impact"	✓	✓
Standard socket	✓	✓
Fast forward and reverse fastening	✓	✓
Slow forward and reverse fastening	✓	✓

Ultimate ✓ Not suitable ✓ Good ✓

A wide selection of retainers provides versatility for every type of application - all with power, speed and comfort.

Finally, your toughest jobs have met their match.



Pin Retainer
for infrequent socket change



Hole
for pin o-ring type retention



Friction Ring
for rapid socket change



Quick Change
for screwdriver bits or torsion bars

Impact wrenches - 3/8"



RP9521

Energy efficient motor

FEATURES

- Rocking dog clutch
- Friction ring socket retainer
- Built-in power regulator
- Ergonomic handle

BENEFITS

- Great tool for soft joints
- Improves productivity and quality
- Operator comfort
- Compact for easy access

RP9523



Same features as RP9521 with Pin socket retainer



RP9522

Versatility tool

FEATURES

- Rocking dog clutch
- Friction ring socket retainer
- Built-in power regulator
- Butterfly start/reverse trigger
- 360° air inlet swivel connector

BENEFITS

- Great tool for soft joints
- Quick direction change
- Compact for easy access



RP9524

High torque in small package

FEATURES

- Pin clutch
- Friction ring socket retainer
- Through handle air exhaust
- Compact & ergonomic

BENEFITS

- Clutch delivers smooth operation & extends durability
- One hand push button forward/reverse
- Exhaust is directed away from work piece



RP9525

High torque in small package

FEATURES

- Pin clutch
- Pin socket retainer
- Built in power regulator
- Through handle air exhaust
- Compact & ergonomic

BENEFITS

- Versatile & comfortable
- Quick torque adjustment
- Positive socket retention

See accessories on page 9

MODEL	PART NUMBER	SQUARE DRIVE	FREE SPEED	WORKING TORQUE		MAXIMUM TORQUE		AIR CONSUMPTION		OVERALL LENGTH		NET WEIGHT		NOISE LEVEL	SOUND POWER	VIBRATION	AIR INLET
		in.	rpm	Nm	ft. lb.	Nm	ft. lb.	l/s	cfm	mm	in.	kg	lb	dB(A)	dB(A)	m/s ²	NPTF
RP9521	615 190 9521	3/8	11,000	6.8-70	5-50	122	90	4.7	10	146	5.75	1.2	2.6	84	95	4.9	1/4"
RP9522	615 190 9522	3/8	9,500	6.8-70	5-50	122	90	4.7	10	146	5.75	0.9	2.0	86	97	2.6	1/4"
RP9523	615 190 9523	3/8	11,000	6.8-70	5-50	122	90	4.7	10	146	5.75	1.2	2.6	84	95	4.9	1/4"
RP9524	615 190 9524	3/8	8,500	27-217	20-160	272	200	5.7	12	152	6.0	1.4	3.1	94	105	<2.5	1/4"
RP9525	615 190 9525	3/8	8,500	27-217	20-160	272	200	5.7	12	152	6.0	1.4	3.1	94	105	<2.5	1/4"

@90 PSI(@6.3 Bar) - Listed specifications are for reference only. Please check documents in each tool.

Impact wrenches - 1/2"

RediPower



RP9526

Very compact 1/2" tool

FEATURES

- Pin clutch
- Friction ring socket retainer
- Built in power regulator
- Through handle air exhaust
- Compact & ergonomic
- Forward position : 4 power settings
- Maximum reverse power

BENEFITS

- High torque in a compact tool
- One hand push button forward/reverse

RP9527



Same features as RP9526 with Pin socket retainer



RP9540

High torque/size ratio

FEATURES

- Pin clutch
- Friction ring socket retainer
- Through handle air exhaust
- Compact & ergonomic
- Forward position: 4 power settings
- Maximum reverse power

BENEFITS

- High torque/size ratio
- One hand push button forward/reverse



**RP9550
RP9552
Kits**

Same features as RP9540 in kits with Imperial (IKIT) and Metric (MKIT) sockets sizes
See details on page 9



RP9541

Withstanding rough use

FEATURES

- Pin clutch in oil bath
- Friction ring socket retainer
- Steel clutch housing

BENEFITS

- Ideal for fast rundown with high torque
- Easy maintenance
- Durability

RP9542



Same features as RP9541 with Pin socket retainer

RP9543



Same features as RP9541 with Quick change chuck



RP9545

Durability & economy

FEATURES

- Pin clutch
- Friction ring socket retainer
- High reverse torque
- High torque/air consumption ratio
- Ergonomic handle

BENEFITS

- Ideal for rework operations
- Operator comfort
- Quick torque adjustment

See accessories on page 9

MODEL	PART NUMBER	SQUARE DRIVE	FREE SPEED	WORKING TORQUE		MAXIMUM TORQUE		AIR CONSUMPTION		OVERALL LENGTH	NET WEIGHT	NOISE LEVEL	SOUND POWER	VIBRATION	AIR INLET		
		in.	rpm	Nm	ft. lb	Nm	ft. lb	l/s	cfm	mm	in.	kg	lb	dB(A)	dB(A)	m/s ²	NPTF
RP9526	615 190 9526	1/2	8,500	27-217	20-160	272	200	5.7	12	152	6.0	1.4	3.1	94	105	<2.5	1/4"
RP9527	615 190 9527	1/2	8,500	27-217	20-160	272	200	5.7	12	152	6.0	1.4	3.1	94	105	<2.5	1/4"
RP9540	615 190 9540	1/2	8,400	34-420	25-310	576	425	7.1	15	191	7.5	2.3	5.1	94	105	<2.5	1/4"
RP9541	615 190 9541	1/2	8,900	34-434	25-320	603	445	6.6	14	168	6.6	2.5	5.5	89	100	2.7	1/4"
RP9542	615 190 9542	1/2	8,900	34-434	25-320	603	445	6.6	14	168	6.6	2.5	5.5	89	100	2.7	1/4"
RP9543	615 190 9543	7/16 hex	8,900	34-434	25-320	603	445	6.6	14	199	7.8	2.6	5.8	89	100	2.7	1/4"
RP9545	615 190 9545	1/2	6,900	34-542	25-400	746	550	9.0	19	180	7.1	2.5	5.6	96	107	4.0	1/4"
RP9550 IKIT	615 190 9550	1/2	8,400	34-420	25-310	576	425	7.1	15	191	7.5	2.3	5.1	94	105	<2.5	1/4"
RP9552 MKIT	615 190 9552	1/2	8,400	34-420	25-310	576	425	7.1	15	191	7.5	2.3	5.1	94	105	<2.5	1/4"

@90 PSI(@6.3 Bar) - Listed specifications are for reference only. Please check documents in each tool.

Impact wrenches - 1/2" and 3/4"



RP9546



Heavy duty & comfort



FEATURES

- Pin clutch
- Friction ring socket retainer
- Steel clutch housing
- Ergonomic grip
- Forward position: 4 power settings
- Maximum reverse power

BENEFITS

- Good for soft & hard joints
- Withstands rough use
- Operator comfort
- Quick torque adjustment

RP9546 Kits

Same features as RP9546 in kits with Imperial (IKIT) and Metric (MKIT) sockets sizes

See details on page 9



RP9549



Comfort and flexibility

FEATURES

- Single dog clutch
- Friction ring socket retainer
- Steel clutch housing
- Ergonomic grip

BENEFITS

- Good for soft & hard joints
- Withstands rough use
- Versatility & durability

RP9547



Same features as RP9549 with Hole socket retainer



RP9560



Power & durability

FEATURES

- Pin clutch
- Friction ring socket retainer
- High power to weight ratio
- Forward position: 4 power settings
- Maximum reverse power

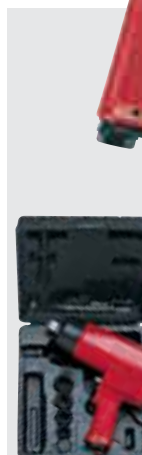
BENEFITS

- Good for hard joints
- Operator comfort

RP9551 RP9553 Kits

Same features as RP9560 in Kits with Imperial (IKIT) and Metric (MKIT) sockets sizes

See details on page 9



RP9561



Strong & durable

FEATURES

- Pin clutch in oil bath
- Hole type socket retainer
- Steel clutch housing
- Built-in power regulator

BENEFITS

- Withstanding rough use
- Ideal for fast rundown with high torque
- Easy for maintenance

See accessories on page 9

MODEL	PART NUMBER	SQUARE DRIVE	FREE SPEED	WORKING TORQUE		MAXIMUM TORQUE		AIR CONSUMPTION		OVERALL LENGTH		NET WEIGHT		NOISE LEVEL	SOUND POWER	VIBRATION	AIR INLET
				Nm	ft lb	Nm	ft lb	l/s	cfm	mm	in.	kg	lb				
RP9546	615 190 9546	1/2	6,400	68-610	50-450	827	625	2.6	5.5	178	7.0	2.49	5.5	95	106	4.9	1/4"
RP9546 MKIT	615 190 0546	1/2	6,400	68-610	50-450	827	625	2.6	5.5	178	7.0	2.49	5.5	95	106	4.9	1/4"
RP9546 IKIT	615 190 8546	1/2	6,400	68-610	50-450	827	625	2.6	5.5	178	7.0	2.49	5.5	95	106	4.9	1/4"
RP9547	615 190 9547	3/4	3,900	271-1017	200-750	1559	1150	18.4	39	226	8.9	5.75	12.6	97	108	8.0	3/8"
RP9549	615 190 9549	3/4	3,900	271-1017	200-750	1559	1150	18.4	39	226	8.9	5.75	12.6	97	108	8.0	3/8"
RP9551 IKIT	615 190 9551	3/4	4,200	200-950	150-700	1360	1000	11.3	24	244	9.6	4.80	10.5	99	110	4.9	3/8"
RP9553 MKIT	615 190 9553	3/4	4,200	200-950	150-700	1360	1000	11.3	24	244	9.6	4.80	10.5	99	110	4.9	3/8"
RP9560	615 190 9560	3/4	4,200	200-950	150-700	1360	1000	11.3	24	244	9.6	4.80	10.5	99	110	4.9	3/8"
RP9561	615 190 9561	3/4	5,500	102-680	75-500	1020	750	14.1	30	216	8.5	4.80	10.5	100	111	5.1	3/8"

@90 PSI(@6.3 Bar) - Listed specifications are for reference only. Please check documents in each tool.

Impact wrenches - 1"

RediPower



RP9548



Compact tool

FEATURES

- Single dog clutch
- Hole type socket retainer
- Steel clutch housing
- Ergonomic grip

BENEFITS

- Good for soft joints
- Withstands rugged use
- Compact tool



RP9597



Power & easy handling

FEATURES

- 2 Jaw clutch in oil bath
- Hole type socket retainer
- Steel clutch housing
- 3 pieces construction
- High torque

BENEFITS

- Good for both soft & hard joints
- Withstands rugged use
- Adjustable dead handle for operator comfort



RP9582



Safe & easy to handle

FEATURES

- Rocking dog clutch
- Hole type socket retainer
- Progressive throttle permits slow seating of bolt
- Inside trigger

BENEFITS

- Ideal for soft pull & prevailing torque joints
- Good handling & directional changes



RP9583



Easy access in tight areas

FEATURES

- Rocking dog clutch
- Friction ring socket retainer
- Progressive throttle permits slow seating of bolt
- 152mm (6") extended anvil
- Reverse valve

BENEFITS

- Ideal for soft pull & prevailing torque joints
- Good handling & directional changes
- Extended anvil for easy access

See accessories on page 9

MODEL	PART NUMBER	SQUARE DRIVE	FREE SPEED	WORKING TORQUE		MAXIMUM TORQUE		AIR CONSUMPTION		OVERALL LENGTH		NET WEIGHT		NOISE LEVEL	SOUND POWER	VIBRATION	AIR INLET
				Nm	ft lb	Nm	ft lb	l/s	cfm	mm	in.	kg	lb				
RP9548	615 190 9548	1	3,900	135-810	100-600	1285	950	18.4	39	226	8.90	5.75	12.6	97	108	8.0	3/8"
RP9582	615 190 9582	1	4,200	200-1225	150-900	1900	1400	18.9	40	394	15.5	12.3	27.0	110	121	4.3	1/2"
RP9583	615 190 9583	1	4,200	200-1225	150-900	1900	1400	18.9	40	564	22.2	13.5	29.8	110	121	4.3	1/2"
RP9597	615 190 9597	1	4,700	407-1898	300-1400	2712	2000	22.7	48	241	9.50	9.10	20.0	101	112	13.0	1/2"

@90 PSI(@6.3 Bar) - Listed specifications are for reference only. Please check documents in each tool.