



Explosion-proof operation and stepless control for a smoother safer lift

Atlas Copco air hoists and trolleys are the industry benchmark for fast, precise and reliable lifting of heavy loads – even in cramped and sometimes hostile industrial environments.

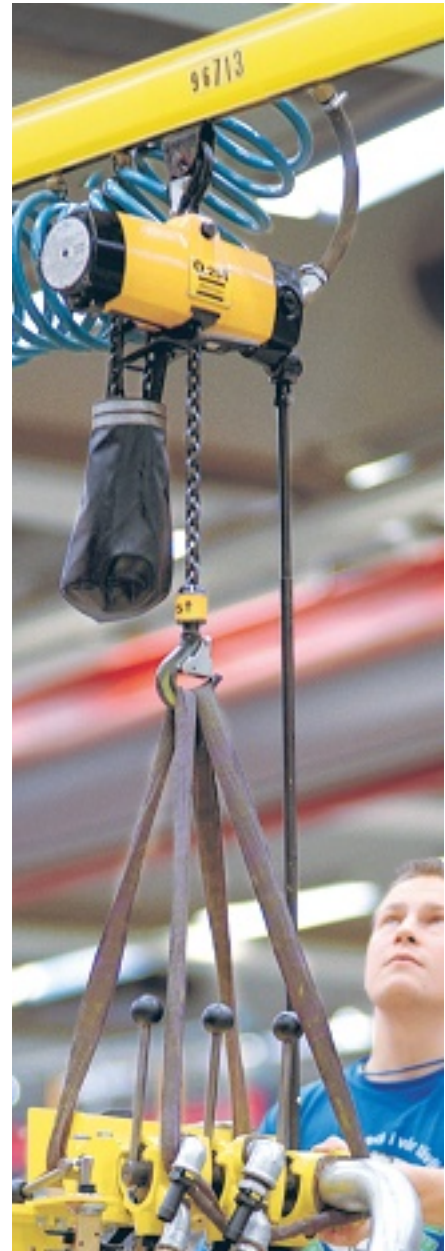
Compact and lightweight, they are easy to control, survive rough handling and provide heavyweight performance.

Explosion proof for safe operation

Our air hoists and trolleys are ideal for lift applications in hazardous environments. All are certified Explosion-proof, to stringent European standards, in compliance with the EU ATEX Directive. Available in six sizes, they offer lift capacities from 200 kg to 5 tons. All hoists and trolleys are certified to level Ex II 2G T5 II B D100°C.

Simple installation

The trolleys are easy to install. The wheels are designed so that the trolley is equally suitable on both parallel and tapered I-beam section beams. The distance between the wheels is easily adjusted to suit the beam width by turning the suspension yoke.



Selection guide

Air hoist selection program

The fastest way to choose correct hoists and accessories is by using the Windows based computer program available on CD-rom.

Ordering No. 9833 1087 00

To order your hoist or trolley with accessories factory fitted, simply list all items required and add the

Ordering No. 8990 0001 00

EXAMPLE: To order a 500 kg hoist with motor driven trolley, four button five-metre long pendant control and a load chain for a ten-metre lift, send the following:

Order to be sent	Comments
1 x 8451 1540 28	LLA500 EX Hoist block
11 x 4310 2293 00	Load chain for hoist = Required height of lift + 0.5 m, (see technical data for LLA Hoists)
1 x 8451 1520 14	TLT1000MN Motor driven trolley
1 x 4310 2263 90	4 button handle + hoist actuator
5 x 4380 0576 94	Hose set for 4 button pendant control
1 x 8990 0001 00	Instruction to assemble above items

- **Precise and stepless speed control** – Through effective stepless control with excellent creep characteristics the LLA air hoists are fast to use over the entire speed range.
- **Heavy duty performance** – These air hoists can continually operate at maximum load with frequent start and stop cycles without risk of damage.
- **Elimination of load sink** – The patented brake mechanism eliminates load-sink when starting lifting, and automatically holds the load if the air supply fails.
- **Compact size** – The small dimensions make the LLA hoists easy to install, even in the most restricted space. Also the low weight means the hoists can easily be moved for maintenance or relocation purposes.
- **Lubrication free** – The complete range is also available in lubrication free versions.



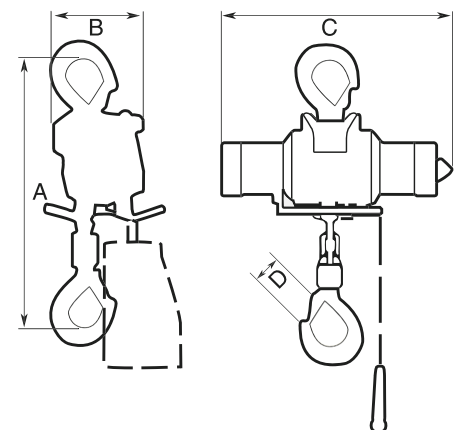
Model	Max lifting capacity kg	Lifting speed at full load		Chain drops qty	Weight excl chain		Chain weight		Required chain-length metre	Air consumption		Hose size		Air inlet thread BSP	Ordering No.
		m/min	ft/min		kg	lb	kg/m	lb/ft		l/s	cfm	mm	in		
LLA200 EX	200	20.2	66.3	1	12.7	28.0	0.9	0.6	Lifting height + 0.5	38	81	12.5	1/2	1/2	8451 1540 02
LLA250 EX	250	18.6	61.0	1	12.7	28.0	0.9	0.6	Lifting height + 0.5	37	78	12.5	1/2	1/2	8451 1540 10
LLA500 EX	500	12.6	41.3	1	12.7	28.0	0.9	0.6	Lifting height + 0.5	38	81	12.5	1/2	1/2	8451 1540 28
LLA1000 U EX ^a	1000	6.3	20.7	2	14.5	32.0	0.9	0.6	2 x Lifting height + 0.5	38	81	12.5	1/2	1/2	8451 1540 69
LLA1000 EX	1000	6.3	20.7	2	15.0	33.0	0.9	0.6	2 x Lifting height + 0.5	38	81	12.5	1/2	1/2	8451 1540 36
LLA2500 EX	2500	3.2	10.5	1	42.5	93.7	2.9	1.9	Lifting height + 0.6	40	85	12.5	1/2	1/2	8451 1540 44
LLA5000 EX	5000	1.6	5.2	2	65.5	144.4	2.9	1.9	2 x Lifting height + 0.9	40	85	12.5	1/2	1/2	8451 1540 51
Lubrication free															
LLA200L EX	200	20.2	66.3	1	12.7	28.0	0.9	0.6	Lifting height + 0.5	38	81	12.5	1/2	1/2	8451 1550 09
LLA250L EX	250	18.6	61.0	1	12.7	28.0	0.9	0.6	Lifting height + 0.5	37	78	12.5	1/2	1/2	8451 1550 17
LLA500L EX	500	12.6	41.3	1	12.7	28.0	0.9	0.6	Lifting height + 0.5	38	81	12.5	1/2	1/2	8451 1550 25
LLA1000L U EX ^a	1000	6.3	20.7	2	14.5	32.0	0.9	0.6	2 x Lifting height + 0.5	38	81	12.5	1/2	1/2	8451 1550 66
LLA1000L EX	1000	6.3	20.7	2	15.0	33.0	0.9	0.6	2 x Lifting height + 0.5	38	81	12.5	1/2	1/2	8451 1550 32
LLA2500L EX	2500	3.2	10.5	1	42.5	93.7	2.9	1.9	Lifting height + 0.6	40	85	12.5	1/2	1/2	8451 1550 41
LLA5000L EX	5000	1.6	5.2	2	65.5	144.4	2.9	1.9	2 x Lifting height + 0.9	40	85	12.5	1/2	1/2	8451 1550 58

^a Without overload protection device, not to be used within the European Community.

NOTE: Load chain and control chain must be ordered separately. Performance figures are at 6 bar working pressure.

Dimensions

Model	A		B		C		D	
	mm	in	mm	in	mm	in	mm	in
LLA200 / 250 EX	377	14.8	122	4.8	390	15.4	29	1.1
LLA500 EX	377	14.8	122	4.8	390	15.4	29	1.1
LLA1000 U EX	445	17.5	122	4.8	390	15.4	29	1.1
LLA1000 EX	495	19.4	122	4.8	390	15.4	29	1.1
LLA2500 EX	575	22.6	212	8.3	546	21.5	50	2.0
LLA5000 EX	785	30.9	249	9.8	546	21.5	60	2.4



Atlas Copco trolleys are available in 3 sizes, for maximum loads of 1, 3 and 5 tonnes. All models can be offered with air motor drive. The 1 tonne trolley includes motor without pedant control. The 3 and 5 tonne includes handle for control chain (control chain must be ordered separately). The 1 and 3 tonne trolleys are also available in manual versions.



Model	Max capacity kg	Max speed with full load		Air consumption		Beam width		Curve radius min		Weight		Ordering No.
		m/min	ft/min	l/s	cfm	mm	in	mm	in	kg	lb	
Manual												
TLT1000 HN	1000	-	-	-	-	50-160	2-6.3	1250	50	9.4	21	8451 1520 06
TLT1000 HW	1000	-	-	-	-	161-280	6.3-11	1250	50	10.7	23.6	8451 1520 63
TLT3000 HN	3000	-	-	-	-	74-180	2.9-7.1	2200	86.6	31.5	69.5	8451 1520 55
TLT3000 HW	3000	-	-	-	-	181-300	7.1-11.8	2200	86.6	34	75	8451 1520 89
Motor driven												
TLT1000 MN ^a	1000	14	45.9	4	8.5	50-160	2-6.3	1250	50	11	24	8451 1520 14
TLT1000 MW ^a	1000	14	45.9	4	8.5	161-280	6.3-11	1250	50	12.3	27.1	8451 1520 71
TLT3000 MN ^b	3000	17.8	58.4	42	89	74-180	2.9-7.1	2200	86.6	48	105.8	8451 1520 30
TLT3000 MW ^b	3000	17.8	58.4	42	89	181-300	7.1-11.8	2200	86.6	51.5	113.5	8451 1520 97
TLT5000 M ^b	5000	16.2	53.1	42	89	181-300	7.1-11.8	2500	98.4	74	163.2	8451 1520 48

^a Pendant control must be ordered separately.

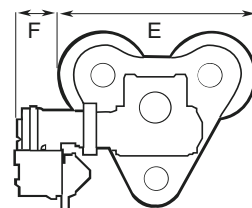
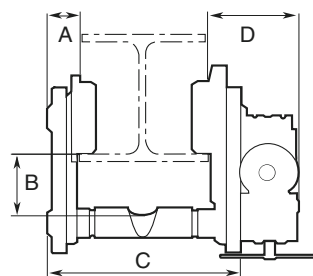
^b Includes handle for control chain. Control chain must be ordered separately.

Performance figures are at 6 bar working pressure.

Motor-driven trolleys have 1/2" BSP air connection. 12.5 mm (1/2") hose size is recommended for TLT1000MN/MW, 20 mm for TLT3000MN/MW and TLT5000M.

Dimensions

Model	A		B		C		D		E		F	
	mm	in	mm	in	mm	in	mm	in	mm	in	mm	in
Manual												
TLT1000 HN	26	1.1	52	2.0	212	8.3	-	-	264	10.4	-	-
TLT1000 HW	26	1.1	52	2.0	Beam width + 57	Beam width + 2.3	-	-	264	10.4	-	-
TLT3000 HN	35	1.4	78	3.1	262	10.3	-	-	384	15.2	-	-
TLT3000 HW	35	1.4	78	3.1	Beam width + 89	Beam width + 3.5	-	-	384	15.2	-	-
Motor driven												
TLT1000 MN	24	1.0	52	2.0	212	8.3	225	8.9	264	10.4	-	-
TLT1000 MW	24	1.0	52	2.0	Beam width + 57	Beam width + 2.3	225	8.9	264	10.4	-	-
TLT3000 MN	37	1.5	78	3.1	262	10.3	148	5.9	380	15.0	94	3.7
TLT3000 MW	37	1.5	78	3.1	Beam width + 89	Beam width + 3.5	148	5.9	380	15.0	94	3.7
TLT5000 M	41	1.6	93	3.7	Beam width + 97	Beam width + 3.8	166	6.6	437	17.2	59	2.4



Accessories Included

For hoists

Wooden handle for pull chain hose nipple BSP 1/2"

Suspension hook and load hook

For trolleys

TLT 3000 MN/MW/ 5000 M

Wooden handle for pull chain

Optional Accessories

For air hoists

Designation	LLA200/250/ 500/1000 EX Ordering No.	LLA2500/5000 Ordering No.
Load chain, zinc plated, per m	4310 2293 00	4310 2296 00
Control chain, zinc plated, per m	4310 0748 00	4310 0748 00
2 button pendant control		
Handle and actuators only	4310 2261 90	4310 2262 90
Hose set per m	4380 0576 91	4380 0576 91
4 button pendant control		
Handle and actuators only	4310 2263 90	4310 2264 90
Hose set per m	4380 0576 94	4380 0576 93
Twist rod control		
Complete (1.1-2.0 m)	4310 0774 91	4310 0774 91
Extension set (1.1-1.9 m)	4310 0780 91	4310 0780 91
Articulating link	4310 0876 91	4310 0876 91
Chain collectors		
PVC for length of chain		
- 4 m	4310 0742 04	
- 7 m	4310 0742 07	4310 2291 07
-12 m	4310 0742 12	
-18 m	4310 0742 18	
-25 m	4310 0742 25	
Chain collectors		
Steel for length of chain		
-12 m	4310 2102 80	
-18 m	4310 2109 80	
Overload protection device		
LLA200 EX / 250 EX	4310 0812 83	
LLA500 EX	4310 0812 84	
LLA1000 U EX	4310 0812 85	
LLA1000 EX / 2500 EX / 5000 EX	incl as standard	incl as standard
Safety hooks, zinc plated	4310 0739 01	
Chain stop, zinc plated	4310 0740 91	4310 2097 91

NOTE: For items specified per metre, the required length should be indicated by multiplying the Ordering No. by the required length, ie. to order 12 m of chain for an LLA250 the order should be **12 x 4310 2293 00**.

When ordering load chain, follow the recommendations on chain given in the technical data for LLA hoists.

For trolleys

Designation	TLT1000M Ordering No.	TLT3000M Ordering No.	TLT5000M Ordering No.
Zinc plated control chain per m		4310 0748 00	4310 0748 00
2 button pendant control			
Handle and actuator only	4310 0835 91	4310 2262 90	4310 2262 90
Hose kit per m	4380 0576 92	4380 0576 91	4380 0576 91